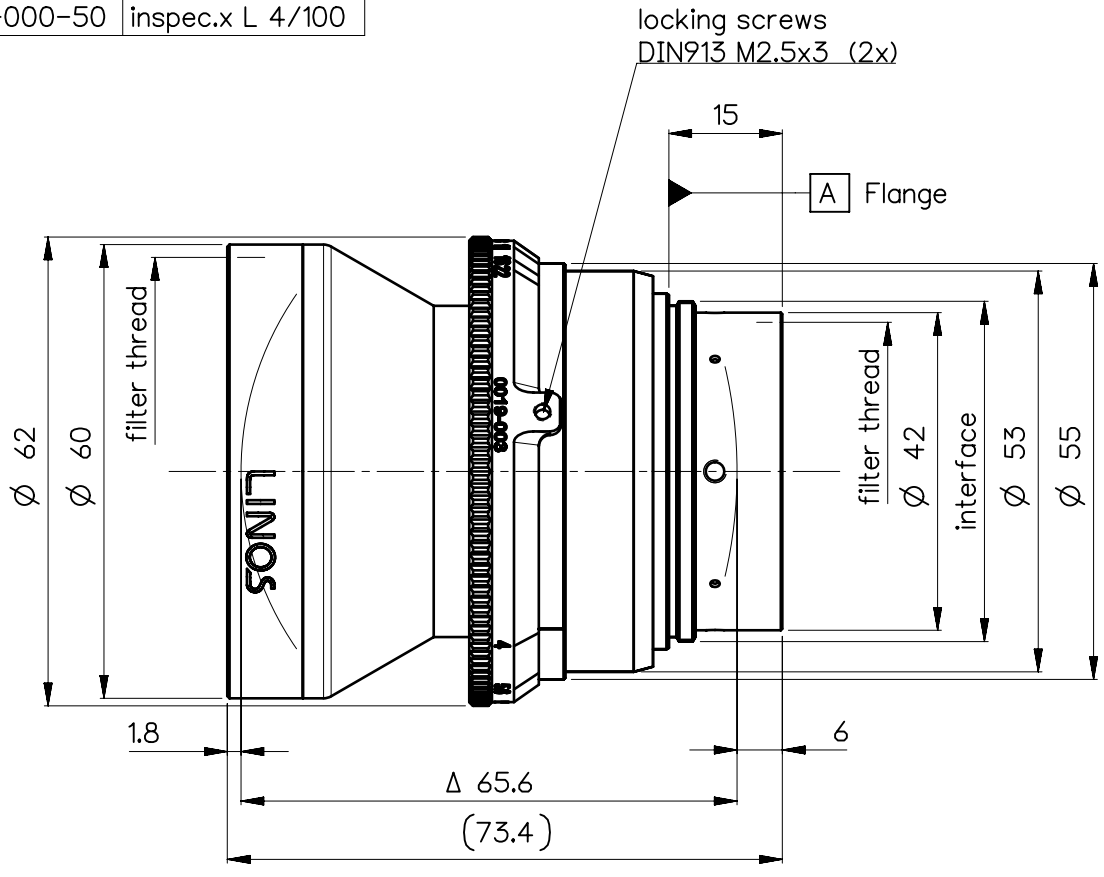
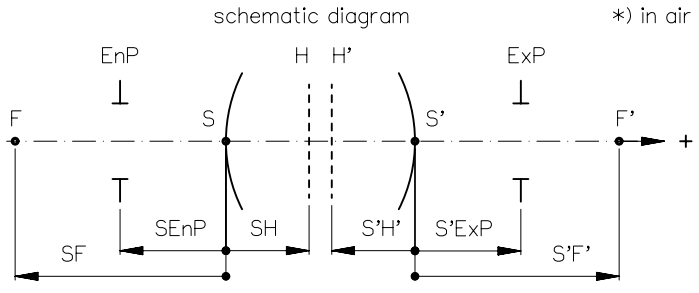


order number	lens name
0019-003-000-50	inspec.x L 4/100



Specification	ON	7722-9001	
image circle max. (mm)	70.4	working distance (mm)	553 ... ∞
focal length f' (mm)	100.0	interface	M45 x0.75
magnification β' [range]	-0.05 [-0.2 ... 0]	filter thread	M58 x0.75 / M40.5 x0.5
spectral range λ (nm)	400 - 750	weight (g)	330

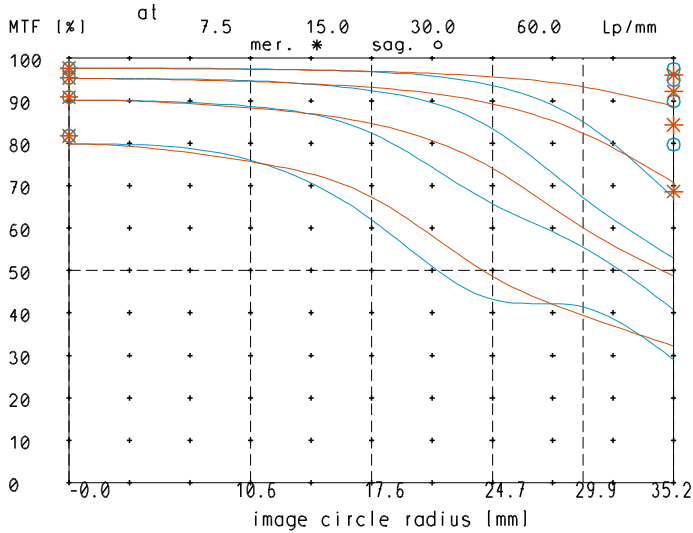


design includes CCD cover glass:	yes / 2 mm N-BK7		
SF (mm)	-55.2	f-stop	4
S'F' (mm) *	82.6	∅ EnP	23.8
HH' (mm) *	3.4	∅ Exp	23.5
SH (mm)	44.8		5.6
S'H' (mm) *	-17.4		17.9
SEnP (mm)	46.3		17.6
S'Exp (mm) *	-15.9		12.3
			12.3
			9.1
			9.0
			6.3
			6.2
			4.6
			4.5

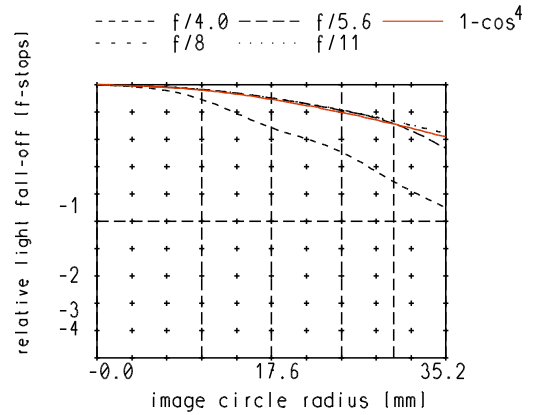
NX	EU-D	AL-T1A	US-D	US-ML	not export controlled	
	REV	ECC	DATE	APPROVED	PDM Status Freigabe	
	a	NeuAusg	19.09.18	Riegg	-	
PROTECTIVE NOTE "DIN ISO 16016" TO BE OBSERVED	GENERAL TOLERANCE OF DIMENSION, FORM, POS.				SCALE 1:1	
	SURF. TREATMT				MATERIAL	
	BASIC TOLERANCING PRINCIPLE				TITLE	
					inspec.x L 4/100	
DIN A 4	FIRST DATE NAME				DRAWING NO.	
	ISSUE 19.09.18 Riegg					0019-003-100-50-0002a
	CHKD 19.09.18 Stauder					
ALL DIMENSIONS ARE IN MM AND INCLUDE SURFACE TREATMENT				SHEET 1 OF 1		
				REPLACES 0019-003-100-49		

inspec.x_L_4.0/100

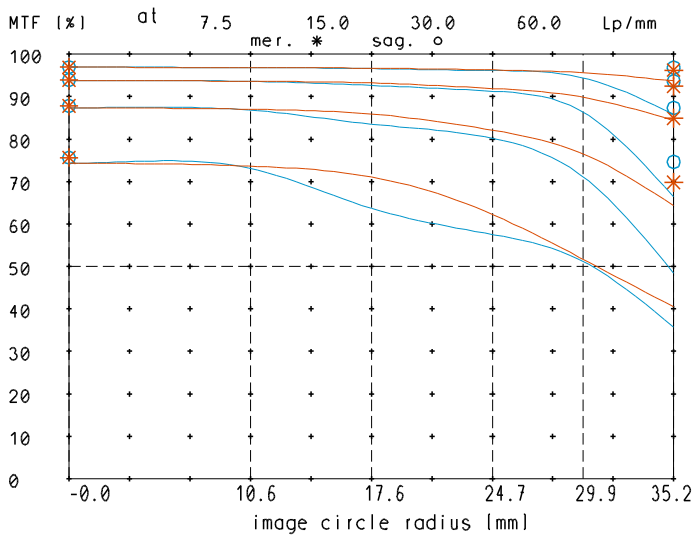
MTF at ratio -0.05 f/ 4.0



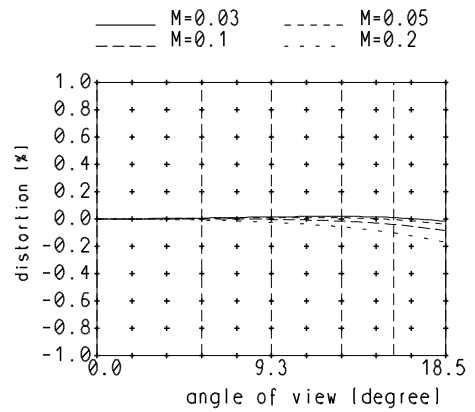
relative light fall-off at ratio -0.05



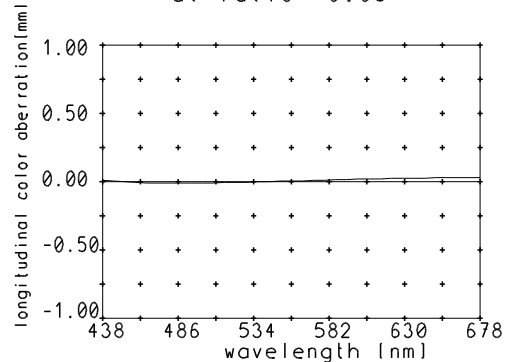
MTF at ratio -0.05 f/ 5.6



Distortion at ratio 0.03 to 0.2



Longitudinal color aberration at ratio -0.05



— sagittal, o Diffraction limited value
 — meridional * Diffraction limited value

Named frequencies (line pairs/mm) in modular transfer function (MTF) as well as diagrams of relative light fall-off, distortion and longitudinal color aberration refer to film plane.